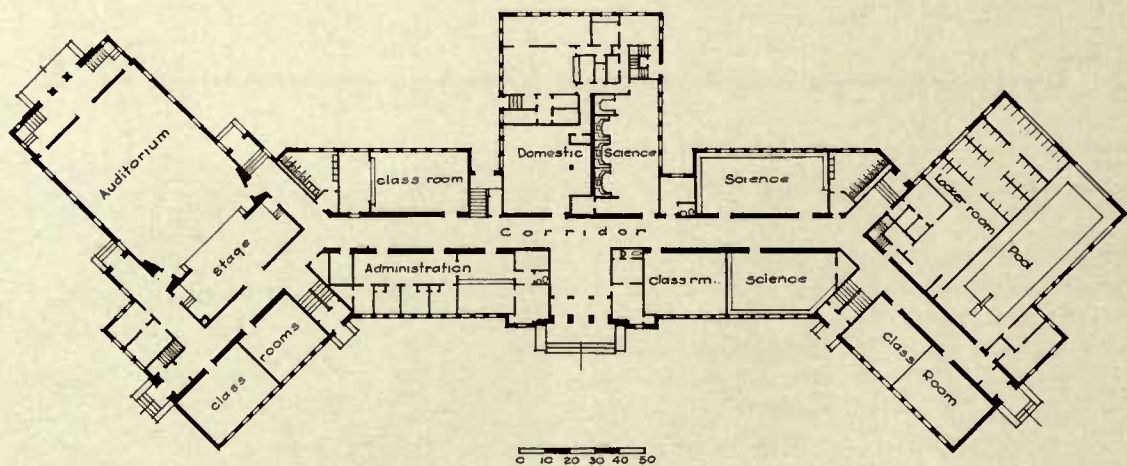




Daniel Webster High School, *Tulsa, Oklahoma*



The Daniel Webster High School is a two-story and basement structure which contains 15 classrooms, a library, 2 cafeterias, a lecture room, corrective gymnasium, girls' gymnasium, auditorium seating 400, domestic-science department, 2 manual training rooms, 3 laboratories, offices, swimming

pool, dressing rooms. Another adjacent building houses shops, boys' gymnasium, and lockers. Both structures are fireproof. Exterior walls are brick with stone trim. Both buildings were completed in July 1938 at a construction cost of \$662,855 and a project cost of \$768,257.